

JEFFERSON COUNTY PUBLIC SCHOOLS  
STUDENT RETENTION RATE

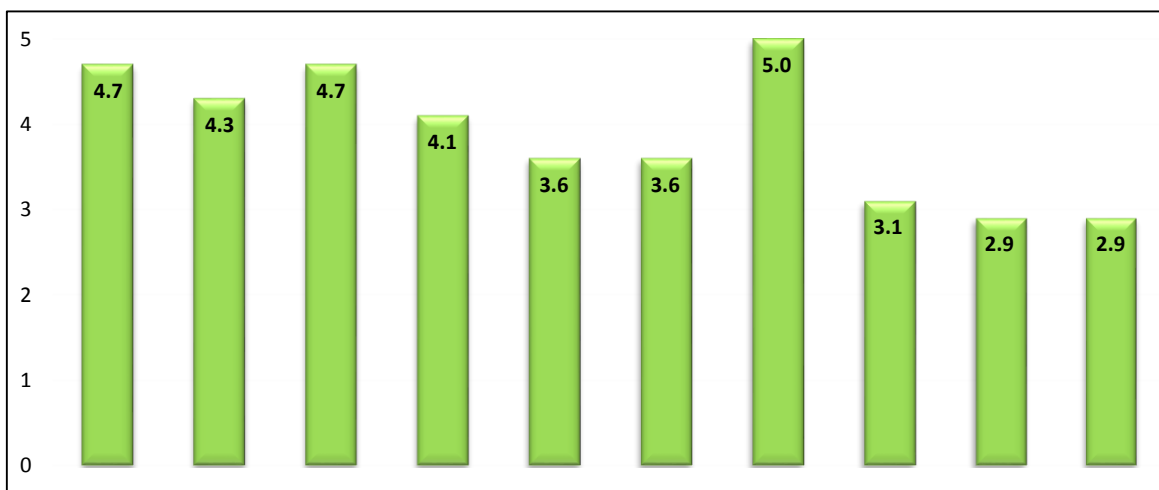
TREND DATA

Elementary Schools	2009-10	2010-11	2011-12	2012-13	2013-14	2014-15	2015-16	2016-17	2017-18	2018-19
Alex R Kennedy							0.0	0.0	0.0	0.0
Atkinson	0.0	0.0	0.0	0.0	0.0	0.9	0.0	0.0	0.6	0.0
Auburndale	0.0	0.0	0.0	0.0	0.0	0.0	0.0	0.0	0.0	0.0
Audubon	0.0	0.9	0.0	0.0	0.0	0.0	0.0	0.0	0.0	0.2
Bates	0.6	0.0	0.0	0.0	0.0	0.0	0.0	0.0	0.0	0.0
Blake	0.0	0.0	0.0	0.0	0.0	0.0	0.0	0.0	0.0	0.0
Bloom	0.0	0.0	0.0	0.0	0.0	0.0	0.0	0.0	0.0	0.2
Blue Lick	0.0	0.0	0.0	0.0	0.0	0.0	0.6	0.0	0.0	0.0
Bowen	0.0	0.0	0.0	0.0	0.0	0.0	0.4	0.0	0.0	0.0
Brandeis	0.0	0.0	0.0	0.0	0.0	0.0	0.0	0.0	0.0	0.0
Breckinridge/Franklin	0.0	0.0	0.0	0.0	0.0	0.0	0.0	0.0	0.0	0.0
Byck	0.0	0.0	0.0	0.0	0.0	0.0	0.0	0.0	0.0	0.0
Camp Taylor	0.0	0.0	0.0	0.7	0.0	0.0	0.0	0.0	0.0	0.0
Cane Run	0.0	0.0	0.0	0.0	0.0	0.0	0.0	0.0	0.0	0.0
Carter	0.0	0.5	0.0	0.0	0.0	0.0	0.0	0.0	0.0	0.0
Chancey	0.4	0.0	0.4	0.4	0.0	0.0	0.5	0.0	0.2	0.0
Chenoweth	0.0	0.0	0.6	0.0	0.0	0.6	0.0	0.0	0.0	0.4
Cochran	0.0	3.5	0.8	0.0	0.0	0.0	0.0	0.0	0.3	0.0
Cochrane	0.0	0.0	0.0	0.9	0.5	0.0	0.0	0.0	0.0	0.0
Coleridge-Taylor	0.0	1.2	0.0	0.0	0.0	0.0	0.0	0.0	0.0	0.0
Coral Ridge	0.0	0.0	0.0	0.0	0.2	0.0	0.0	0.0	0.0	0.0
Crums Lane	0.0	0.0	0.0	0.0	0.0	0.0	0.7	0.0	0.0	0.0
Dixie	0.0	0.0	0.0	0.0	0.0	0.0	0.0	0.0	0.0	0.0
Dunn	1.0	0.0	0.0	0.0	0.0	0.0	0.0	0.0	0.0	0.0
Eisenhower	0.0	0.0	0.0	0.0	0.0	0.0	0.0	0.0	0.0	0.0
Engelhard	0.0	0.0	0.0	0.0	0.0	0.0	0.0	0.0	0.0	0.0
Fairdale	0.5	0.0	0.0	0.0	0.0	0.0	0.0	0.0	0.0	0.0
Farmer	0.0	0.0	0.5	0.4	0.3	0.0	0.0	0.0	0.0	0.0
Fern Creek	0.0	0.0	0.0	0.0	0.0	0.0	0.0	0.3	0.0	0.0
Field	0.7	0.7	0.8	0.0	0.0	0.0	0.0	0.0	0.0	0.0
Foster	0.0	0.0	0.0	0.0	0.0	0.0	0.5	0.0	0.0	0.0
Frayser	0.0	0.0	0.0	0.0	0.0	0.0	0.0	0.0	0.0	0.0
Goldsmith	1.4	0.0	0.5	0.0	0.0	0.5	0.0	0.9	0.0	0.0
Greathouse Shryock	0.9	0.5	1.3	0.0	0.0	0.0	0.0	0.0	0.0	0.0
Greenwood	0.0	0.5	0.0	0.5	0.0	0.6	0.0	0.0	0.0	0.0
Gutermuth	0.6	0.6	0.6	0.0	0.0	0.0	1.6	0.0	0.0	0.0
Hartstern	0.0	0.0	0.0	0.0	0.0	0.0	0.0	0.0	0.0	0.0
Hawthorne	1.0	0.0	0.8	0.0	0.0	0.8	0.0	0.0	0.0	0.0
Hazelwood	0.0	0.0	0.0	0.0	0.0	0.0	0.0	0.0	0.0	0.0
Hite	0.0	0.0	0.0	0.0	0.0	0.0	0.0	0.0	0.0	0.0
Indian Trail	0.0	0.6	0.7	0.0	0.0	0.0	0.0	0.0	0.0	0.0
Jacob	1.4	0.0	0.5	0.5	0.0	0.0	0.4	0.3	0.0	0.0
Jeffersontown	0.4	0.0	0.0	0.0	0.0	0.0	0.0	0.0	0.0	0.0
Johnsontown Rd	0.0	0.0	0.0	0.8	1.2	0.0	0.0	0.0	0.0	0.6
Kennedy Montessori	0.0	0.0	0.0	0.0	0.0	0.0	0.0	0.0	0.0	0.0
Kenwood	0.6	0.0	0.0	0.0	0.0	0.0	0.0	0.0	0.0	0.3
Kerrick	0.0	0.0	0.0	0.0	0.0	0.0	0.0	0.0	0.0	0.0
King	0.0	0.0	0.0	0.0	0.0	0.0	0.0	0.0	0.0	0.0
Klondike	0.0	0.0	0.0	0.0	0.0	0.0	0.0	0.0	0.0	0.0
Laukhuf	0.0	0.6	0.0	0.0	0.0	0.0	0.0	0.0	0.0	0.0
Layne	0.0	0.0	0.0	0.0	0.0	0.0	0.0	0.0	0.3	0.0
Lincoln	0.0	0.0	0.0	0.0	0.0	0.0	0.0	0.0	0.0	0.0
Lowe	0.0	0.0	0.5	0.0	0.0	0.0	0.0	0.0	0.0	0.0
Luhr	0.0	0.0	0.0	0.0	0.0	0.0	0.0	0.0	0.2	0.0
Maupin	0.0	0.0	0.0	0.0	0.0	0.0	0.0	0.0	0.0	0.0
Mcferran	0.0	0.0	0.0	0.4	0.1	0.0	0.0	0.0	0.0	0.0

JEFFERSON COUNTY PUBLIC SCHOOLS  
STUDENT RETENTION RATE

TREND DATA

Elementary Schools	2009-10	2010-11	2011-12	2012-13	2013-14	2014-15	2015-16	2016-17	2017-18	2018-19
Medora	0.0	0.0	0.0	0.0	0.2	0.0	0.0	0.0	0.0	0.0
Middletown	0.0	0.0	0.0	0.0	0.3	0.0	0.5	0.0	0.0	0.0
Mill Creek	0.0	0.0	0.6	0.0	0.0	0.0	0.6	0.0	0.0	0.0
Minors Lane	0.0	0.0	1.9	0.0	0.0	0.0	0.0	0.0	0.0	0.0
Norton Commons								0.0	0.0	0.0
Norton	0.0	0.0	0.9	0.0	0.0	0.0	0.0	0.0	0.0	0.0
Okolona	0.0	0.0	0.0	0.0	0.0	0.0	1.2	0.0	0.0	0.0
Portland	0.0	0.0	0.0	0.0	0.0	1.3	0.0	0.0	0.0	0.0
Price	0.6	0.0	0.0	0.0	0.0	0.0	0.0	0.0	0.0	0.0
Rangeland	0.0	0.0	0.0	0.0	0.0	0.0	0.0	0.0	0.0	0.0
Roosevelt Perry	0.0	0.0	0.0	0.0	0.0	0.0	0.0	0.0	0.0	0.0
Rutherford	0.0	0.0	0.0	0.0	0.0	0.0	0.0	0.0	0.0	0.0
Sanders	0.0	0.0	0.0	0.0	0.0	0.0	0.0	0.0	0.0	0.0
Schaffner	0.0	0.0	0.0	0.4	0.3	0.0	0.0	0.0	0.0	0.0
Semple	1.2	1.9	0.0	0.0	0.0	0.0	0.0	0.0	0.0	0.0
Shacklette	0.0	1.1	0.0	0.0	0.2	0.0	0.0	0.0	0.0	0.0
Shelby	0.0	0.0	0.0	0.0	0.1	0.0	0.4	0.8	0.1	0.0
Slaughter	0.0	0.0	0.0	0.0	0.0	0.0	0.0	0.0	0.0	0.0
Smyrna	0.0	0.0	0.0	0.0	0.0	0.6	0.0	0.0	0.0	0.0
St Matthews	0.0	0.0	0.0	0.0	0.4	0.6	0.6	0.6	0.0	0.2
Stonestreet	0.0	0.0	0.0	0.6	0.0	0.7	0.0	0.7	0.2	0.0
Stopher	0.0	0.0	0.0	0.0	0.0	0.0	0.0	0.0	0.0	0.0
Trunnell	0.0	0.0	0.0	0.0	0.0	0.0	0.0	0.0	0.0	0.0
Tully	0.0	0.4	0.0	0.0	0.0	0.0	0.0	0.0	0.0	0.1
Watson Lane	0.0	0.0	0.0	0.0	0.0	0.0	0.0	0.0	0.0	0.0
Watterson	0.0	0.0	0.0	0.0	0.0	0.0	0.0	0.0	0.0	0.4
Wellington	0.0	0.0	0.0	0.6	0.0	0.0	0.0	0.0	0.2	0.0
Wheatley	0.0	0.0	0.0	0.8	0.0	0.0	0.0	0.0	0.0	0.0
Wheeler	0.0	0.0	0.0	0.0	0.0	0.0	0.0	0.0	0.0	0.0
Wilder	0.0	0.0	0.0	0.0	0.0	0.0	0.0	0.0	0.0	0.0
Wilkerson	0.5	0.0	0.0	0.0	0.0	0.0	0.0	0.0	0.0	0.2
Wilt	0.0	0.0	0.0	0.0	0.0	0.0	0.0	0.0	0.0	0.0
Young	0.0	0.0	0.0	0.0	0.0	0.0	0.0	0.0	0.0	0.0
Zachary Taylor	0.6	0.6	0.0	0.5	0.0	0.0	0.0	0.0	0.0	0.0
<b>Brown School (E/M/H)</b>	<b>0.9</b>	<b>0.2</b>	<b>0.8</b>	<b>0.4</b>	<b>0.2</b>	<b>0.4</b>	<b>0.0</b>	<b>0.0</b>	<b>0.0</b>	<b>0.0</b>



DISTRICT TOTALS (E,M,H)	4.7	4.3	4.7	4.1	3.6	3.6	5.0	3.1	2.9	2.9
STATE TOTALS <b>STATE</b>	2.4	2.3	2.3	2.1	1.8	1.9	2.0	1.3	1.3	1.3
YEAR	2009-10	2010-11	2011-12	2012-13	2013-14	2014-15	2015-16	2016-17	2017-18	2018-19